

Application Name: Purge the Spurge - EDRR and Community Outreach for Oblong Spurge

Application Number: 000-0000-17555

By: Benton SWCD

Offering Type: ODA Noxious Weed Grant

Application Type: ODA Noxious Weed

OWEB Region: Willamette Basin

County: Benton

Coordinates: 44.570558,-123.306013

Applicant:

Holly Crosson
456 SW Monroe Ave., Suite 110
Corvallis OR 97333-4460
(541) 753-7208 Ext.203
hcrosson@bentonswcd.org

Payee:

Holly Crosson
456 SW Monroe Ave Ste 110
Corvallis OR 97333
(541) 753-7208 Ext.110
hcrosson@bentonswcd.org

Project Manager:

Laura Brown
456 SW Monroe Avenue, Suite 110
Corvallis OR 97333
5417537208
lbrown@bentonswcd.org

Budget Summary:

OWEB Amount Requested: \$8,808
Total Project Amount: \$11,903

Administrative Information

Abstract

Provide an abstract statement for the project. Include the following information: 1) Identify the project location; 2) Briefly state the project need; 3) Describe the proposed work; 4) Identify project partners.

Purge the Spurge! is a project initiated by the Benton County CWMA in response to four known sites in Corvallis that have small infestations of the ODA A-Listed Noxious Weed, oblong spurge (*Euphorbia oblongata*). This project addresses the need to 1) control known populations of oblong spurge in Corvallis, 2) identify and treat new sites containing oblong spurge, and 3) educate the public on the impacts of oblong spurge, as well as provide recommendations for alternative landscaping options.

We will use integrated control methods to control this species at known sites. Two of the landowners prefer hand-pulling to herbicide, and at the other two sites, we will use herbicide to control oblong spurge. We will host three community meetings in neighborhoods close to the known sites to increase outreach and education on this species. The Benton County CWMA will be partnering with the City of Corvallis Parks and Recreation Department and the Grand Oaks Neighborhood Association to implement the community meetings. Additionally, we will mail out informational flyers to all homes in the areas surrounding known infestations. The informational flyers will not only highlight the impacts of oblong spurge, but will also provide a selection of dates that landowners can opt-in for either herbicide or manual treatment of oblong spurge on their properties using ODA OSWB funds. We will partner with the City of Corvallis Parks and Recreation Department to post informative signs at a nearby natural area so that people utilizing the natural area will be able to keep a lookout for the plant. The CWMA voted for oblong spurge to be our weed of the year, so we will be posting informative signs across the county to ensure its control. Partners include Benton SWCD, City of Corvallis Parks and Recreation Department, Grand Oaks Neighborhood Association, and Oregon Department of Agriculture.

Location Information

What is the ownership of the project site(s)?

✓ *Public land (any lands owned by the Federal government, the State of Oregon, a city, county, district or municipal or public corporation in Oregon)*

What agency(ies) are involved?

City of Corvallis and Benton County

✓ *Private (land owned by non-governmental entities)*

Please select one of the following Landowner Contact Certification statements:

I certify that I have informed all participating private landowners involved in the project of the existence of the application, and I have advised all of them that all monitoring information obtained on their property is public record.

I certify that contact with all participating private landowners was not possible at the time of application for the following reasons: Furthermore, I understand that should this project be awarded, I will be required by the terms of the OWEB grant agreement to secure cooperative landowner agreements with all participating private landowners prior to expending Board funds on a property.

Please List your reasons

Part of this proposal is to do outreach to landowners to determine if they have oblong spurge on their property. Once we identify landowners that have this A-listed species on their properties, we will go through the appropriate steps to obtain signed permission forms before treating their properties.

This grant will take place in more than one county.

Permits

Other than the land-use form, do you need a permit, license or other regulatory approval of any of the proposed project activities?

- Yes
 No

Racial and Ethnic Impact Statement

Racial and Ethnic Impact Statement

- The proposed grant project policies or programs could have a disproportionate or unique POSITIVE impact on the following minority persons. (indicate all that apply)
- The proposed grant project policies or programs could have a disproportionate or unique NEGATIVE impact on the following minority persons. (indicate all that apply)
- The proposed grant project policies or programs WILL HAVE NO disproportionate or unique impact on minority persons.

Insurance Information

- Working with hazardous materials (not including materials used in the normal operation of equipment such as hydraulic fluid)*
- Earth moving work around the footprint of a drinking water well*
- Removal or alteration of structures that hold back water on land or instream including dams, levees, dikes, tidegates and other water control devices (this does not include temporary diversion dams used solely to divert water for irrigation)*
- Applicant's staff or volunteers are working with kids related to this project (DAS Risk assessment tool not required, additional insurance is required)*
- Applicant's staff are applying herbicides or pesticides (DAS Risk assessment tool not required, additional insurance is required)*

Additional Information

This project affects Sage-Grouse.

Problem Statement

Weed species: List all state listed noxious weeds pertaining to this project. Create a separate entry per weed species.

Species #1

Noxious weed species

Oblong spurge (Euphorbia oblongata)

Habitat: Only list one habitat type per noxious weed species.

Riparian

Upland

Instream

Estuary

Treatment method

Herbicide and Manual

Net treatment acres

0.25

Gross treatment acres

1.0

Total survey acres?

2000

Herbicide(s) and rate?

We are looking at a couple of options, but will choose between the three below dependent on the site

type:

1% Imazapyr

2% Triclopyr (Vastlan)

2-3% Glyphosate

Treatment timing

Treatment will occur in May and June after sprouting but before seeding.

Have you consulted with an ODA staff about this proposal?

Yes

No

If yes who?

Beth Myers-Shenai

Has this project been previously funded by Oregon State Weed Board?

Yes

No

Proposed Solution

Identify your integrated pest management methods:

- Assessment/Management Plan Development*
- Biological control*
- Education and outreach*
- Herbicide control*
- Manual or mechanical control*
- Monitoring*
- Other:*
- Prevention*
- Restoration*
- Survey*

Describe the method of survey planned

We intend to send out letter to over 1000 private homes in the area. When allowed onto properties, we will survey properties for oblong spurge and map occurrences using GPS. We will share data with other practitioners through shared databases including Weed Mapper, Oregon Invasive Hotline, iMapInvasives, and the Benton County CWMA.

Is this project part of a designated weed district?

- Yes
- No

Is the project part of an existing weed management plan?

- Yes
- No

List the name of the management plan?

Benton County Cooperative Weed Management Area (CWMA) Strategic Action Plan

Is this a landowner reimbursement (cost share) project?

- Yes
- No

Goals and Objectives

Goal #1

State your project goal. A goal statement should state desired outcomes and the watershed benefit.

The first goal of this project is to control known populations of oblong spurge in Corvallis.

List specific and measurable objectives. Objectives support and refine the goal by breaking it down into steps for achieving the goal.

We propose to treat the known populations of oblong spurge in Corvallis. In 2019, through our partnership with ODA, we were able to make contact and treat two of the four sites, though the remaining two sites were found and treated after the plants had already gone to seed. We will continue to develop relationships with these landowners to treat the existing populations of oblong spurge on their properties using integrated control methods (manual and herbicide).

Goal #2

State your project goal. A goal statement should state desired outcomes and the watershed benefit.

Our second goal is to identify and treat new sites containing oblong spurge in Corvallis.

List specific and measurable objectives. Objectives support and refine the goal by breaking it down into steps for achieving the goal.

We intend to host community meetings at locations near existing oblong spurge infestations. One example would be to host a meeting at the Grand Oaks Community building, as this is close to one known population. These meeting will highlight how to identify oblong spurge, the impacts of the species, treatment options, and alternatives for landscaping options.

We also will reach at least 1000 residents of Benton County through the mail. We will develop material that highlights how to identify oblong spurge, the impacts of the species, treatment options, and alternatives for landscaping options.

We will provide four days of treatment for landowners to choose from if they find they have oblong spurge on their properties.

Goal #3

State your project goal. A goal statement should state desired outcomes and the watershed benefit.

Our third goal is to educate the public on the impacts of oblong spurge.

List specific and measurable objectives. Objectives support and refine the goal by breaking it down into steps for achieving the goal.

The Benton County CWMA voted to have oblong spurge as the terrestrial species to focus on for 2020. Partners in the CWMA will increase signage and outreach about oblong spurge throughout this year at public lands and offices. We will work to develop a common informative sign to post so all partners are providing the same message.

Which elements of the project will Oregon State Weed Board funds be used for? List specific activity and timing of the activity.

1) Salary and Wages:

Funding for Benton SWCD staff will be used for these tasks: project coordination and management (on-going), administration and oversight of all grant activities (on-going), coordination and facilitation of education and outreach activities (March and April 2020), information sharing and reporting (on-going), and monitoring of project sites (photo points).

2) Contracted Services:

Treatment of oblong spurge will occur between May and June 2020. We intend to pick four days for landowners to sign up for treatment to occur.

3) Travel

Travel to sites and events occurs throughout the project timeline.

4) Materials/Supplies:

We intend to send out ~1200 letters to landowners to do outreach on oblong spurge and provide a treatment option for them. We also will host three community meetings, which may require a rental fee.

5) Other:

In case Benton SWCD is doing hand-pulling, or partners need to instigate a larger volunteer hand-pulling option, we need funding for disposal of the weeds.

How does this project relate to other projects being completed or planned (BLM, USFS or local projects) ?

This project does not relate to other projects being completed or planned in the area.

How does this project fit into the statewide and/or local weed management objectives? Identify the county weed listing priority if known.

Objective 1: Leadership and Organization

The Benton County CWMA provides local leadership and organization to groups, agencies, and landowners related to the invasive plant issues around the county.

Objective 2: Cooperative Partnerships

The Benton County CWMA is made up of a broad partnership of agencies, organizations, and landowners.

Objective 4: Education and Awareness

Through partnerships developed in this project, we provide education and outreach to land managers, landowners, and the general public through community meetings, outreach pamphlets, and increased signage in public use areas.

Objective 6: Early Detection and Control of New Invaders

This project includes EDRR of new invaders as a key element: we intend to control the first reported locations of

Euphorbia oblongata in Benton County and to find new sites infested with the A-listed species.

Wrap-Up

Are there additional partners

- Yes
 No

List additional partners?

Project Partner #1

Name or organization

City of Corvallis Parks and Recreation Department

Role and responsibilities?

America McMillin is the co-chair of the Benton County CWMA and works for the City of Corvallis Parks and Recreation Department. She will oversee the increased signage of oblong spurge at City properties including natural areas and City buildings. She will also work with the City to spread information about oblong spurge through social media outlets. She will participate in outreach and community meetings.

Project Partner #2

Name or organization

Grand Oaks Neighborhood Association

Role and responsibilities?

Grand Oaks Neighborhood Association is located near the heart of the known oblong spurge sites. This neighborhood has an active conservation-oriented component and hosted a "Let's Pull Together" site in their neighborhood in May 2019 to remove English ivy from the oaks. They will continue to partner with the Benton CWMA to spread the word about oblong spurge, and have offered their community clubhouse as a potential community meeting location.

Project Partner #3

Name or organization

Oregon Department of Agriculture

Role and responsibilities?

Beth Myers-Shenai, Integrated Weed Management Specialist with ODA, will continue to provide in-kind support in the form of professional advice, site visits, and consultation on weed control activities. ODA was able to treat the oblong spurge sites when they were reported in spring and summer of 2019.

How will restoration be a part of your project? If restoration is not a component of this project please explain.

Most of the properties that we will be working on are private landscaped properties. We will provide suggestions for what landowners can use as an alternative to oblong spurge, but overall restoration will not be a component of this project.

Does this project protect a high priority species or habitat? Please give a brief description of the species or habitat.

The majority of sites where this A-listed Noxious Weed is present will be on private properties. However, the majority of sites that this plant has already been found at are near Bald Hill, which is a city owned Natural Area that has oak habitat present.

At the end of the project, how will it be determined whether the goals and objectives listed in application have been met? What elements will be monitored and by whom, how often and for how long?

This proposal is employing EDRR techniques to ensure the eradication of oblong spurge from Benton County. Currently we only have four small sites where we have found this species. Monitoring and evaluation of this project is currently being led by Benton SWCD, and will continue for as long as needed, provided funding is available. Success will be determined by comparing the number of sites treated each year as well as the number of new sites found each year. We will compare post-treatment distribution and abundance of oblong spurge to pre-treatment abundance and distribution.

We will monitor using photo points and GIS mapping to determine number of sites treated and found each year. There are few sites currently, so we predict discovering more sites in 2020, treating those sites for a few years to ensure eradication, then continuing to educate the public to keep their eyes out for oblong spurge in the future.

Our hope is that through EDRR techniques we can get rid of this species.

What is the long-term plan for this project? Who will maintain the project after the grant and for how long?

Since this is an EDRR focused project, we hope that our actions over the next three - five years will increase awareness of oblong spurge and identify and control any existing populations of the species so that it is no longer a threat to Benton County. We expect the greatest number of reports to occur in 2020, but will continue to provide control options as well as outreach and education opportunities over the next few years to ensure all populations are located. We do think eradication is possible for this species in Benton County. The Benton County CWMA will continue to work to eradicate this species as long as funding allows.

Budget

Item	Unit Type	Unit Number	Unit Cost	OWEB Funds	External Cash	External In-Kind	Total Costs
Salaries, Wages and Benefits							
Benton SWCD - Project Manger	Hours	140	\$34.00	\$4,760	\$0	\$0	\$4,760
Benton SWCD - Executive Director	Hours	23	\$44.00	\$0	\$0	\$1,012	\$1,012
Category Sub-total				\$4,760	\$0	\$1,012	\$5,772
Contracted Services							
Oblong spurge herbicide and hand-pulling. Technician to respond to sites found through outreach.	Days	4	\$515.00	\$2,060	\$0	\$0	\$2,060
Volunteers to help with outreach and community meetings	Each	15	\$25.43	\$0	\$0	\$382	\$382
Assistance with outreach activities (City of Corvallis Parks and Recreation Department)	Days	2	\$500.00	\$0	\$0	\$1,000	\$1,000
Project Consultation ODA (Beth Myers-Shenai)	Days	1	\$500.00	\$0	\$0	\$500	\$500
Category Sub-total				\$2,060	\$0	\$1,882	\$3,942
Travel							
Mileage for this project (BSWCD staff)	Miles	200	\$0.58	\$116	\$0	\$0	\$116
Category Sub-total				\$116	\$0	\$0	\$116
Materials and Supplies							
Snacks for Community Meetings	Each	3	\$67.00	\$0	\$0	\$201	\$201
Postage and Envelopes for outreach	Each	1200	\$0.65	\$780	\$0	\$0	\$780
Location for Community Meetings	Each	3	\$67.00	\$201	\$0	\$0	\$201
Category Sub-total				\$981	\$0	\$201	\$1,182
Equipment							
			\$0	\$0	\$0	\$0	\$0
Category Sub-total				\$0	\$0	\$0	\$0
Other							
Disposal of bagged hand pulled weeds	Each	3	\$30.00	\$90	\$0	\$0	\$90
Category Sub-total				\$90	\$0	\$0	\$90
Modified Total Direct Cost Amounts				\$8,007	\$0	\$3,095	\$11,102
Indirect Costs							
Federally Accepted 'de minimis' Indirect Cost Rate (up to 10%)	10%			Indirect Cost Total: \$801			
Total				\$8,808	\$0	\$3,095	\$11,903

* = OWEB funds excluded from indirect.

If the budget includes unusually high costs and/or rates, provide justification for those costs and/or rates.

If the budget identifies a contingency amount for specific line item(s) within the Contracted Services and Materials and Supplies budget categories, explain the specific reasons a contingency is needed for each line item. Contingencies are line-item specific and cannot be used for other costs.

Funding and Match

Fund Sources and Amounts

Organization Type	Name	Source Note	Contribution Type	Amount	Description	Status
City	City of Corvallis Parks and Recreation Department		In-Kind - Labor	\$1,000	Assistance with Outreach Activites	Secured
Non-Governmental Organization	Benton Soil and Water Conservation District		In-Kind - Materials	\$201	Snacks for Community Meetings	Secured
Non-Governmental Organization	Benton Soil and Water Conservation District		In-Kind - Labor	\$1,012	Executive Director Oversight	Secured
Non-Governmental Organization	Benton Soil and Water Conservation District		In-Kind - Volunteers	\$382	Outreach to neighbors and communities	Pending
State	Oregon Department of Agriculture		In-Kind - Labor	\$500	Project Consultation (Beth Myers-Shenai)	Secured
Fund Source Cash Total			\$0	Fund Source In-Kind Total		\$3,095

Match

Contribution Source-Type: Description	Amount
City of Corvallis Parks and Recreation Department-In-Kind - Labor: Assistance with Outreach Activites	\$1,000
Benton Soil and Water Conservation District-In-Kind - Materials: Snacks for Community Meetings	\$201
Benton Soil and Water Conservation District-In-Kind - Labor: Executive Director Oversight	\$1,012
Benton Soil and Water Conservation District-In-Kind - Volunteers: Outreach to neighbors and communities	\$382
Oregon Department of Agriculture-In-Kind - Labor: Project Consultation (Beth Myers-Shenai)	\$500
Match Total	\$3,095

Do match funding sources have any restrictions on how funds are used, timelines or other limitations that would impact the portion of the project proposed for OWEB funding?

- Yes
 No

Do you need state OWEB dollars (not Federal) to match the requirements of any other federal funding you will be using to complete this project?

- Yes
 No

Does the non-OWEB cash funding include Pacific Coast Salmon Recovery Funds?

- Yes
 No

Uploads

Map: [Maps.pdf](#) -

Photo (other): [Photos.pdf](#) -

Letters: [CWMA Grant Suport Letter_CityofCorvallis.pdf](#) -

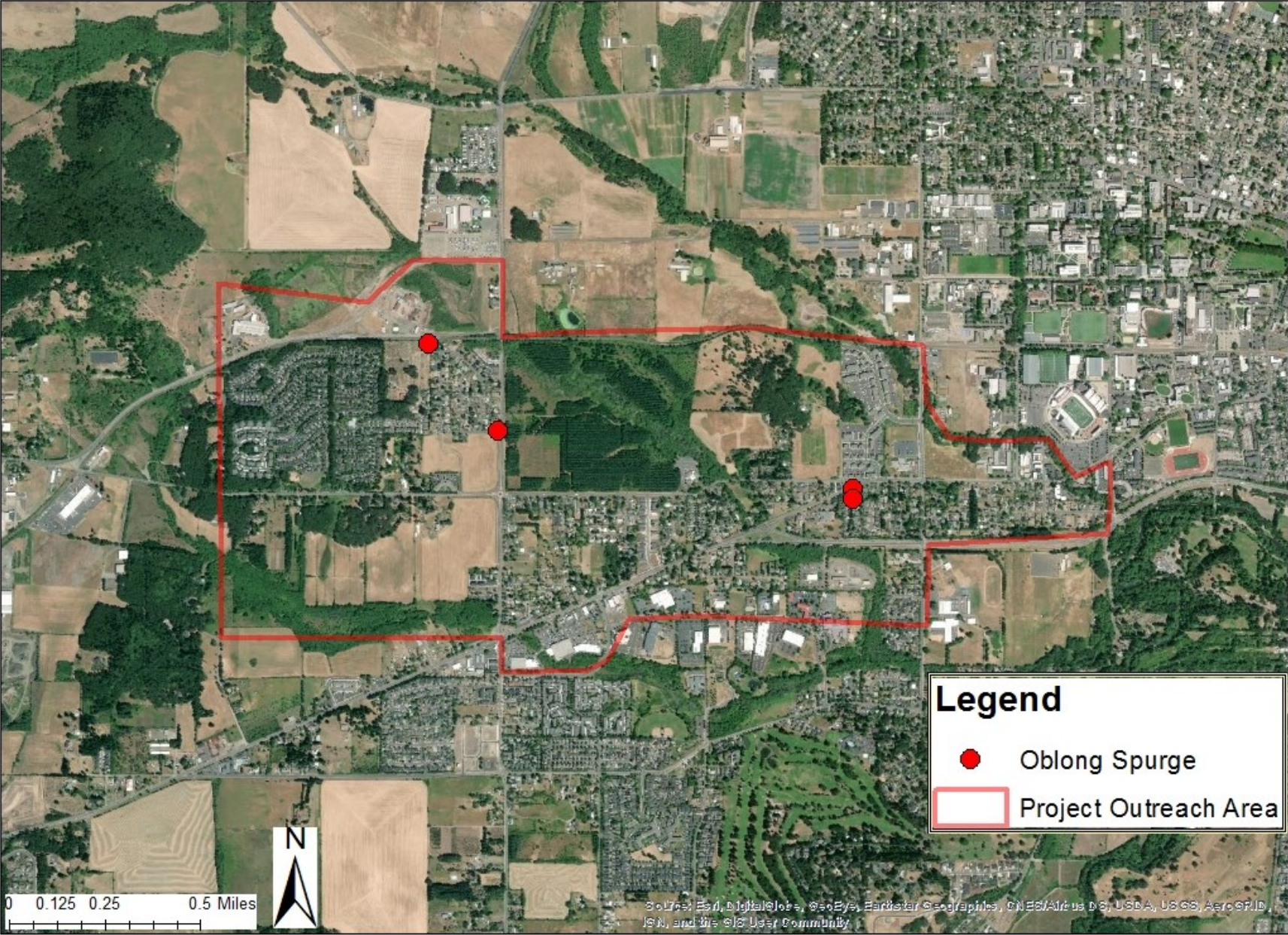
Secured Match Forms: [SignedMatch.pdf](#) -

Permit Page

No Permits have been identified for this application.

Appendix A. Known sites of oblong spurge in Benton County. Red line indicates outreach area.

Oblong spurge known locations



Appendix B. Photos of oblong spurge in Benton County.





1310 SW Avery Park Dr.
Corvallis, OR 97333
www.corvallisoregon.gov
(541) 766-6918
FAX (541) 754-1701

Oregon State Weed Board
635 Capital St. NE
Salem, Oregon 97301-2532

December 6, 2019

Subject: Support for the BC CWMA OSWB application entitled “*Purge the Spurge – EDRR and Community Outreach*”

Dear Oregon State Weed Board Grant Review Team Members,

I am writing to express the City of Corvallis Parks and Recreation Department’s support for the Benton County Cooperative Weed Management Area’s (BC CWMA) grant proposal for Early Detection and Rapid Response and Community Outreach regarding Oblong spurge (*Euphorbia oblongata*). Our department manages a variety of natural areas throughout Benton County and works to ensure residents have enlightening and education experiences as well. We are also partners in the BC CWMA and work to keep our natural areas free of invasive species. The BC CWMA is proposing to treat existing patches of oblong spurge and begin outreach to neighborhoods surrounding the existing populations. As partners in this process, City of Corvallis Parks and Recreation Department will assist in outreach activities, such as posting signs around our parks highlighting this A-listed Noxious Weed.

The City of Corvallis Parks and Recreation Department will contribute \$1,000 in staff time and community room meeting space for outreach activities related to this project.

Thank you for your consideration of this proposal.

Sincerely,

A handwritten signature in black ink, appearing to read "Jude Geist", with a long horizontal line extending to the right.

Jude Geist
Parks Division Manager
Corvallis Parks and Recreation



ODA Noxious Weed Grant Program

Match Funding Form

Document the match funding shown on the budget page of grant application



OSWB accepts all non-OWEB funds as match. An applicant may not use another OWEB grant to match an OSWB grant. At the time of agreement signature, match funding for OSWB funds requested must be secured, you must show that at least 25% of match funding has been secured. On this form, identify the type of match (cash or in-kind), the status of the match and either a dollar amount or a dollar value (based on local market rates) of the in-kind contribution. You may also provide proof of match by submitting a copy of signature pages from your funding sources, such as Federal or State grants/contracts.

If you have questions about whether your proposed match is eligible or not, visit the OWEB website at <https://www.oregon.gov/oweb/Documents/Budget-Categories-Definitions.pdf> or contact Tristen Berg • tberg@oda.state.or.us or 503-986-4622.

Grantee: *Benton CWMA*

Grant #:

Project Name:

Purge the Spurge!

Match Funding Source	Type (√one)	Status (√one)*	Dollar Value	Match Funding Source Signature/Date*
<i>BWCD - volunteers, snacks, ED time</i>	<input type="checkbox"/> cash <input checked="" type="checkbox"/> in kind	<input checked="" type="checkbox"/> secured <input type="checkbox"/> pending	<i>1595</i>	<i>He 12/9/19</i>
	<input type="checkbox"/> cash <input type="checkbox"/> in kind	<input type="checkbox"/> secured <input type="checkbox"/> pending		
	<input type="checkbox"/> cash <input type="checkbox"/> in kind	<input type="checkbox"/> secured <input type="checkbox"/> pending		
	<input type="checkbox"/> cash <input type="checkbox"/> in kind	<input type="checkbox"/> secured <input type="checkbox"/> pending		
	<input type="checkbox"/> cash <input type="checkbox"/> in kind	<input type="checkbox"/> secured <input type="checkbox"/> pending		
	<input type="checkbox"/> cash <input type="checkbox"/> in kind	<input type="checkbox"/> secured <input type="checkbox"/> pending		
	<input type="checkbox"/> cash <input type="checkbox"/> in kind	<input type="checkbox"/> secured <input type="checkbox"/> pending		

* **IMPORTANT:** If you checked the "Secured" box in the Status Column for any match funding source, you must provide either the signature of an authorized representative of the match source in the final Column, or attach a letter of support from the match funding source that specifically mentions the dollar amount you show in the Dollar Value Column.