

State of the Willamette 2020

OWEB & Willamette Anchor Habitat Investments

Andrew Dutterer, OWEB



OWEB Role & Programs

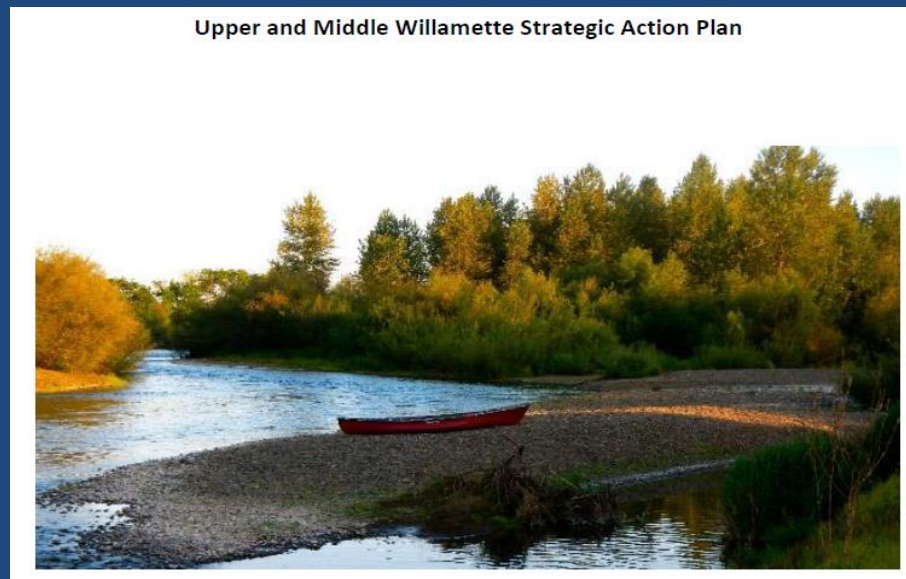
- OWEB Focused Investment Partnerships (FIP)
- Willamette River Anchor Habitat Investments
- OWEB Open Solicitation & other funding programs

*Willamette Confluence and Turtle Flats
(near Eugene/ Springfield)-
Owned and restored by The Nature
Conservancy and Friends of Buford Park.*



Focused Investment Partnerships (FIP)

- Partnership-based, strategic restoration
- Strategic Action Plan
- Results chain & theory of change
- Partnership prioritizes projects for FIP funding



Willamette River Anchor Habitat Investments

- BPA/MMT/OWEB funding partnership
- Willamette River Anchor Habitats
- Solicitation once per year
- 2020 Updates



2020 Solicitation & Review Timeline

Date	Action
January	Solicitation opens
April 17	Applications due to OWEB
May 11-15	Technical review mtg. #1
May 29	TRT feedback to applicants
June/July	Site visits
August 21	Revised applications due to OWEB
September 14-25	Technical review mtg. #2
Oct. – Nov.	HTT/MMT funding decisions
Dec. – Jan. 2021	Grant agreements

Looking Ahead...

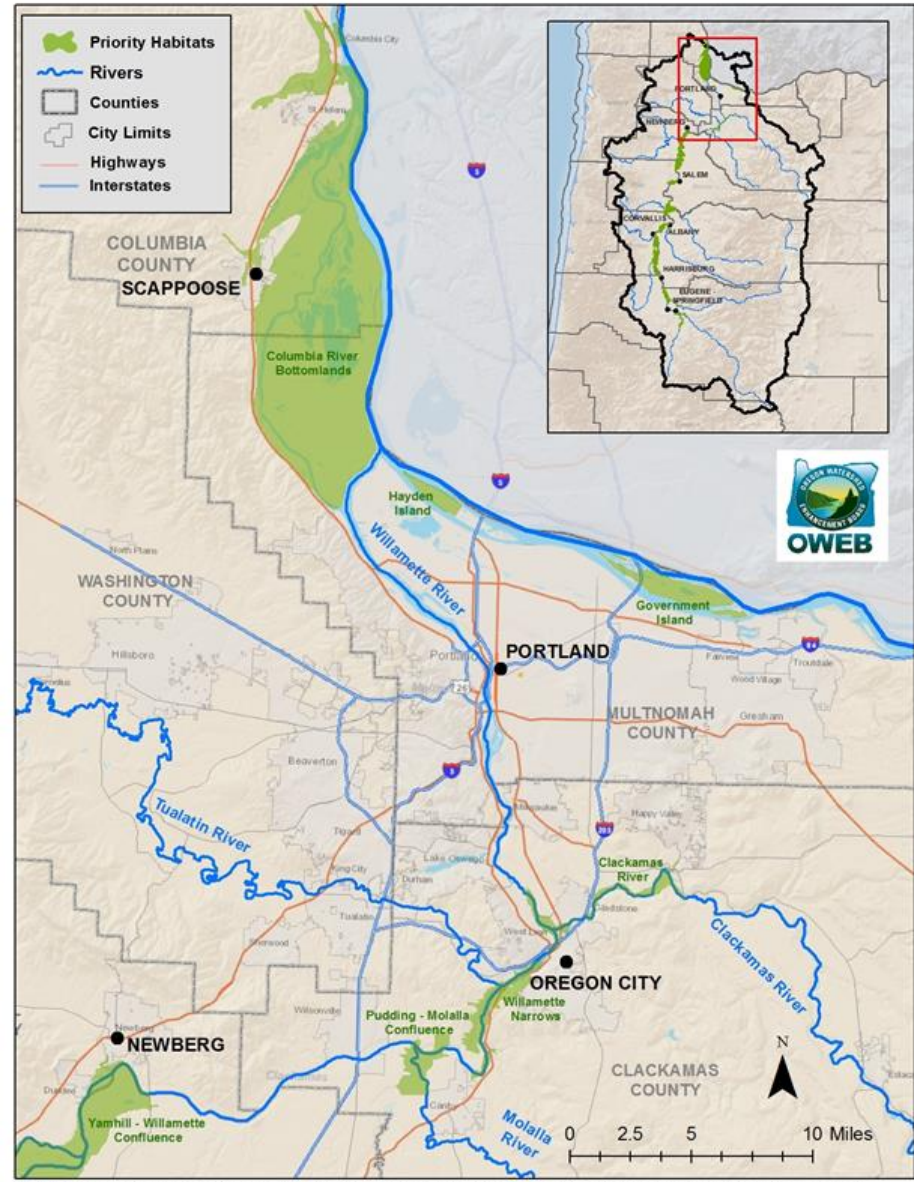
- FIP & Anchor Habitat Investments through 2021
- OWEB Open Solicitation
- OWEB Partnership Technical Assistance
- Reapply to the FIP program



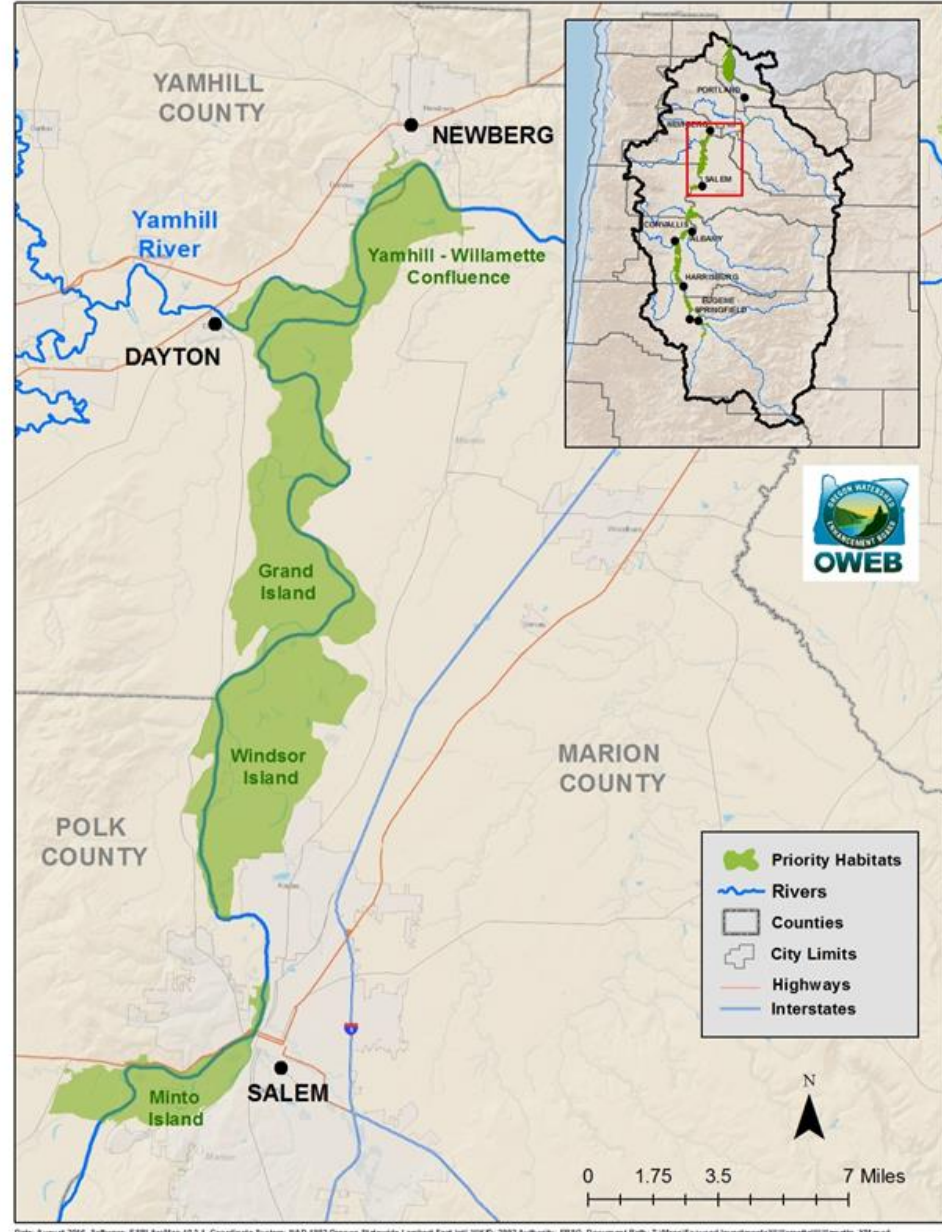
Photo 3: Aerial Flooding Photos- Bowers Rock State Park and Greenbelt Land Trust Little Willamette property during January 2012 flood event (Photo Credit: Calapooia Watershed Council).

Anchor Habitat Maps

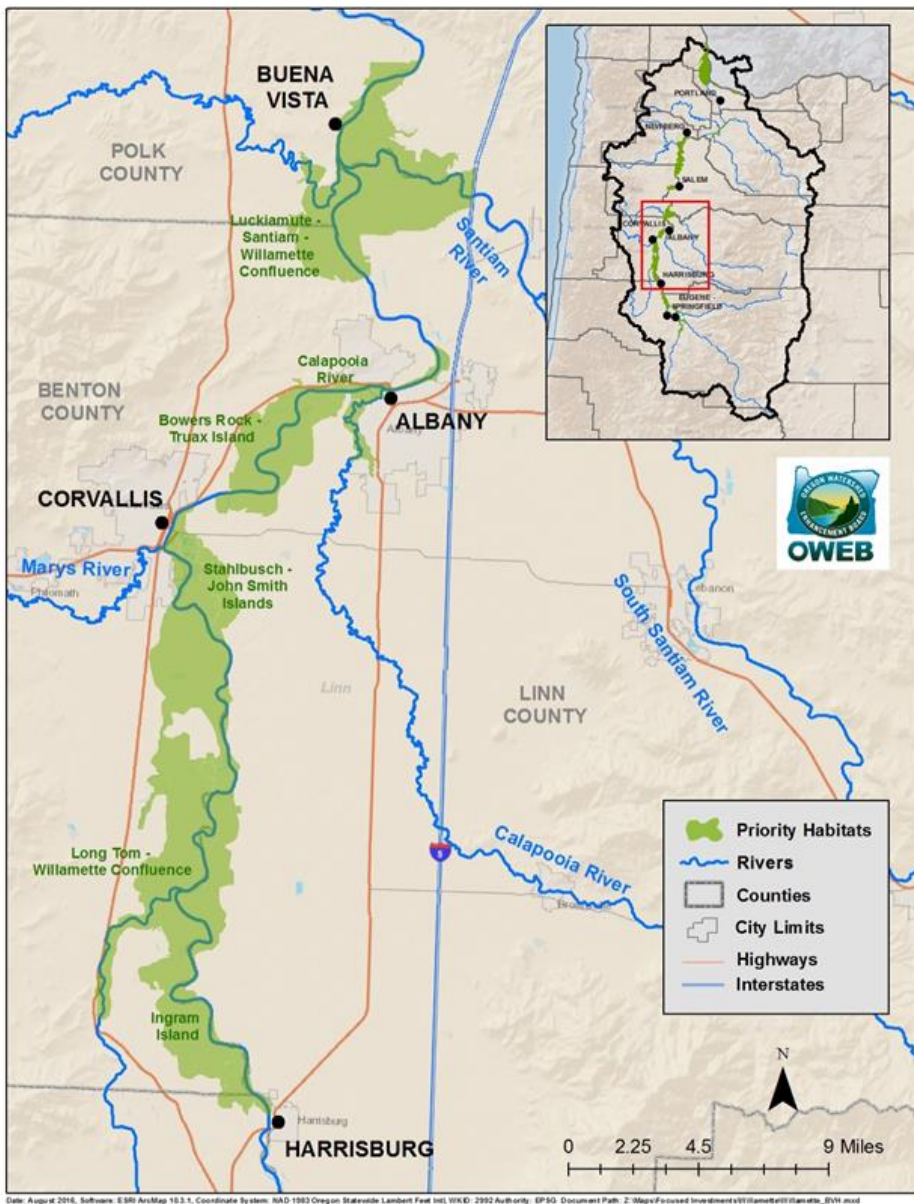
Molalla/Pudding River Confluences to Columbia River Confluence



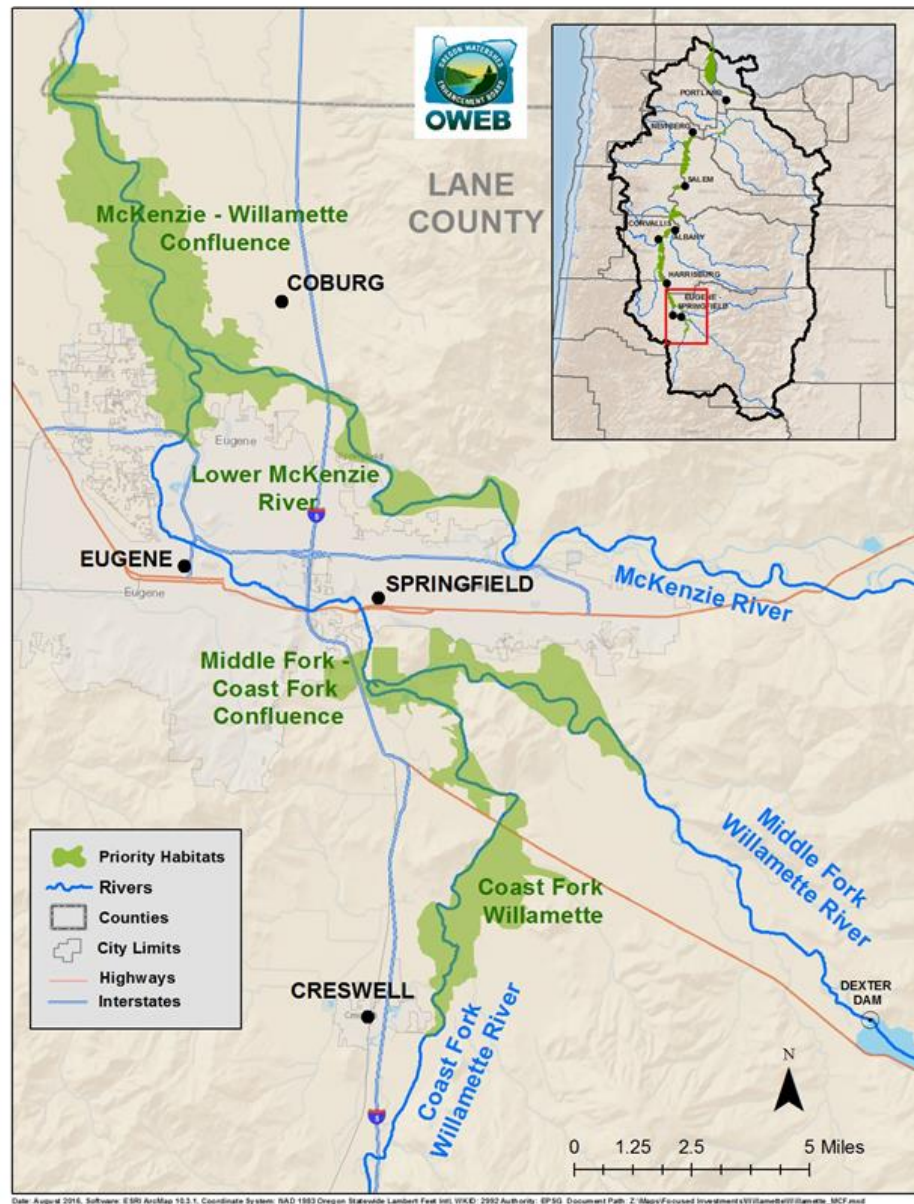
Minto Island to Yamhill River Confluence



Long Tom River Confluence to Santiam River Confluence



Middle Fork - Coast Fork Confluence to McKenzie River Confluence



Date: Aug-2016, Software: ESRI ArcMap 10.3.1, Coordinate System: NAD 1983 Oregon Statewide Lambert Feet Int, WKID: 2992 Authority: EP93, Document Path: Z:\Map\Focused Investment\GIS\Zane\Bull\lanette_2016.mxd

Date: Aug-2016, Software: ESRI ArcMap 10.3.1, Coordinate System: NAD 1983 Oregon Statewide Lambert Feet Int, WKID: 2992 Authority: EP93, Document Path: Z:\Map\Focused Investment\GIS\Zane\Bull\lanette_MCF.mxd

Planned "Focused Investment" Restoration Projects

2016-2022

The Anchor Habitat Working Group is committed to a comprehensive approach to improving fish and wildlife habitat along the Willamette River. Our partners include:

Working Group Members

- Benton SWCD
- Bonneville Environmental Foundation
- Calapooia Watershed Council
- City of Eugene
- Clackamas SWCD
- Coast Fork Willamette Watershed Council
- Friends of Buford Park & Mt. Pisgah
- Greenbelt Land trust
- Long Tom Watershed Council
- Luckiamute Watershed Council
- McKenzie River Trust
- Oregon Department of Fish & Wildlife
- Oregon Parks & Recreation Department
- The Nature Conservancy- Oregon Chapter
- Trust for Public Land
- Willamette Riverkeeper

Funding Members

- Oregon Watershed Enhancement Board
- Meyer Memorial Trust
- Bonneville Power Administration



Areas shown as "Willamette River Anchor Habitats" have been identified by scientists as the locations with the highest value fish and wildlife habitat and offer the greatest return for restoration investments. The Anchor Habitats represent a "stepping stone" approach to providing essential habitat for species with wide ranges such as salmon, song birds, and butterflies.

Project Locations Anchor Habitats

With landowners and public partners, we intend to restore more than ten miles of river habitat and plant over 2000 acres of floodplain forest on the Willamette River over the next decade. Planting trees and improving habitat helps keep our water clean and creates conditions where wildlife thrive.